

# Storm



**Owner/Operator Manual**

**YG272E**

**Owner/Operator Manual**

## Contents

Important . . . . .	2
Safety Warnings. . . . .	2
Before You Start. . . . .	3
Service Warnings . . . . .	3
Getting Started . . . . .	4
Getting Soap . . . . .	4
Nozzles . . . . .	4
Gun and Wand Assembly . . . . .	5
Hose Assembly . . . . .	5
Pressure Washer Components . . . . .	6
Pump . . . . .	8
Warranty . . . . .	10
Warranty Period . . . . .	10
Customer Responsibility . . . . .	11
Disclaimer . . . . .	11

## Important

- ◆ The information provided in this manual will help to ensure the safe operation of this equipment. Failure to comply with the enclosed operating instructions will nullify warranty.

## Safety Warnings

- ◆ This machine is designed to produce very high pressure at the outlet nozzle. High pressure from spray or leaks can penetrate skin and cause serious injury or death.
- ◆ Never direct the spray towards any part of the body.
- ◆ Never try to stop or deflect leaks with your hand.
- ◆ Avoid contact with engine muffler.
- ◆ Never operate machinery while under the influence of alcohol.

## Before You Start

- ◆ Engine Oil – Ensure oil level reads to top of dipstick.  
(Use 10W-30 engine oil).
- ◆ Pump Oil – This pump comes pre-lubricated from factory. Oil level check not required. Consult factory if pump oil is leaking.  
(Use 15W-50 synthetic)
- ◆ Gasoline - Use regular unleaded gasoline.
- ◆ Size your water supply hose - Use no smaller than a 5/8" I.D. hose to feed pump. Hose must be free of kinks and leaks

## Service Warnings

- ◆ Modifications or alterations performed on equipment may void warranty.
- ◆ Replace damaged hoses or fittings.
- ◆ Replacement parts must meet or exceed original factory specifications to ensure safe operation.
- ◆ Do not modify engine parts or settings.
- ◆ Operating machine with either water or oil leaks will void warranty.
- ◆ Do not operate with engine in idle position.
- ◆ Do not leave machine running in bypass (trigger off) for longer than 2 minutes. Failure to do so will destroy pump seals.
- ◆ Inlet water temperature must not exceed 80 Degrees Fahrenheit (27 Degrees Celsius).
- ◆ Ensure you have sufficient water supply. To check water supply, collect water from outlet for one minute. The amount collected must exceed the water volume of your pump. Pump volume is measured in GPM (gallons per minute). Refer to model tag on frame for specifications.
- ◆ Do not allow water to freeze inside pressure washer equipment. (Fill pump fluid end with windshield washer antifreeze when storing in freezing conditions.)
- ◆ Pump must be fed with a minimum pressure of 15 PSI and a maximum pressure of 80 PSI.
- ◆ When feeding pump from a tank, ensure that the tank water level is higher than the pump inlet. (This pump is not designed to draw water)
- ◆ Pump oil must be changed seasonally. Use Part Number 961110 (15W/50 Synthetic).
- ◆ Pump oil capacity: 4.7 oz / 139 ml (do not overfill)
- ◆ Do not operate pressure washer without a water inlet screen or filter. Dirty water will destroy seals and valves.
- ◆ To ensure warranty, please return enclosed warranty document with signature.

## Getting Started

- ◆ Flush water inlet hose before attaching to pump.
- ◆ Attach water inlet hose and pressure hose onto pump.
- ◆ Attach gun/wand assembly to pressure hose and remove nozzle from end of wand.
- ◆ Adjust engine throttle arm to middle position and apply choke.
- ◆ Turn water on, and pull trigger on gun.
- ◆ Inspect for leaks while allowing air to bleed from line.
- ◆ With water flowing out of gun, start engine and continue flushing for 10 seconds.
- ◆ Turn choke off and adjust throttle to full throttle position (3500 RPM factory setting).
- ◆ Release gun and install nozzle into wand to begin washing.

## Getting Soap

- ◆ Your machine is equipped with a low pressure (downstream) soap injector (Approx. 400 PSI). The pressure is reduced automatically by installing the black soap nozzle.
- ◆ Dispense soap as follows:
  1. Place clear vinyl tube with filter attached into soap container.
  2. Ensure soap metering valve is adjusted to a mid-range setting (if equipped See Figure A).
  3. Install black soap nozzle into wand assembly, pull trigger and begin dispensing soap.
  4. Rinse fresh water through valve after each use. This will prevent soap from drying and plugging up the valve.
- ◆ Adjust metering valve according to soap requirements.
- ◆ Soap will automatically stop drawing if colored high pressure tips are in use.

## Nozzles

- ◆ All spray tips provided will produce the same pressure (except the black soaper tip). The only difference is the angle of spray. Use the following as a rule of thumb.
- ◆ Yellow tip / 15 Deg (spray angle) - Use on tough cleaning jobs that have a hard surface ie, sidewalks or driveways.
- ◆ Green tip / 25 Deg - Use on cleaning your car or vinyl siding
- ◆ White tip / 40 Deg - Use on wood surfaces or under your automobile hood. This tip has the lowest impact of the bunch and will not damage the surface while cleaning.
- ◆ Black tip - Use to get soap only

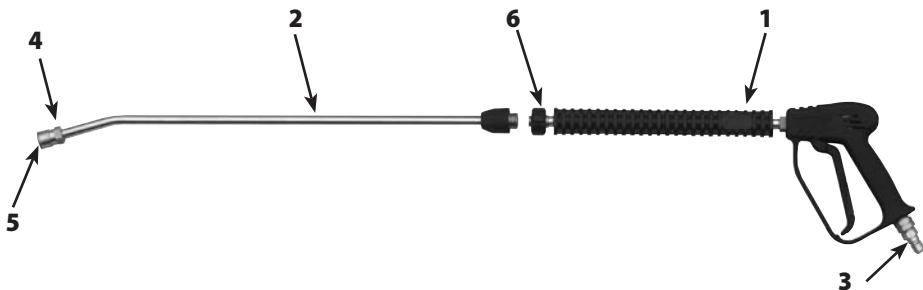


Figure A



### Gun and Wand Assembly

994000C



Item	Part #	Description	Qty
1	72-HGP003	Gun, Plug, 12" Lance with Euro QD, Assy	1
2	921724C	Lance, 24" with 1/4" QD Out / 22mm In	1
3	930011	Nipple	1
4	930001	Coupler	1
5	930015	O-Ring	1
6	33-10001	Seal Kit for connection	1

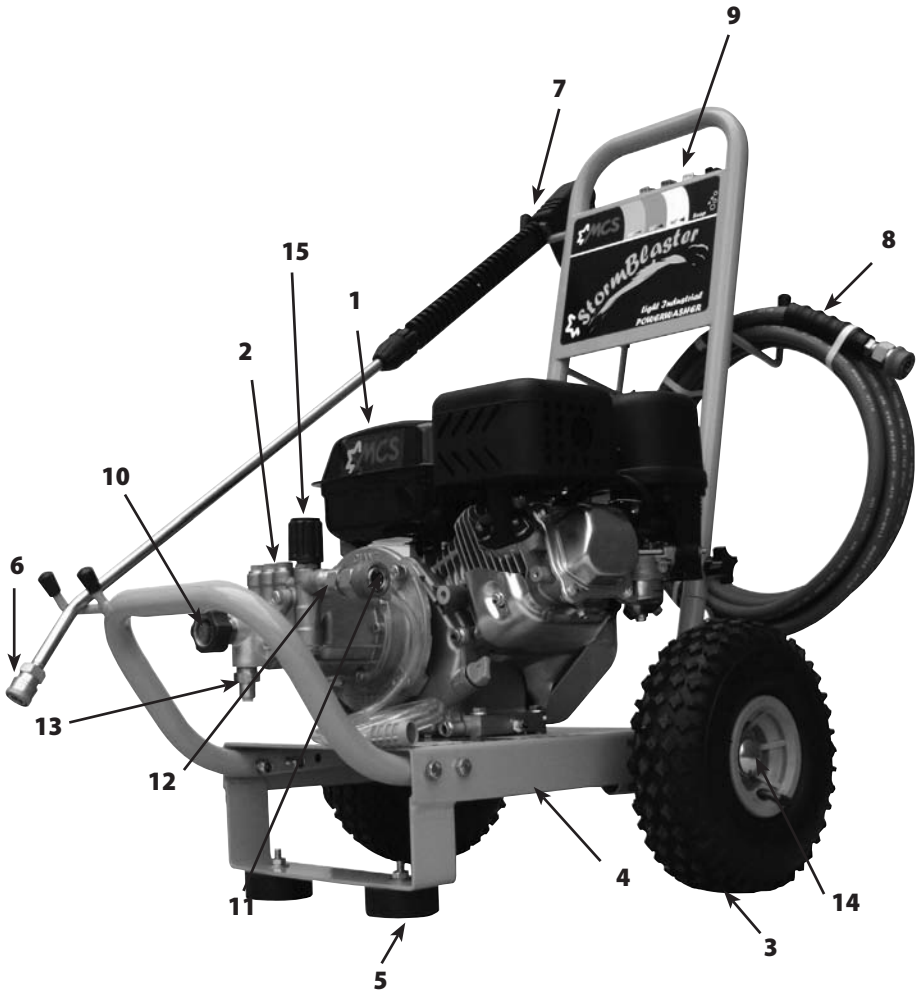
### Hose Assembly

113025H & 113050H



Item	Part #	Description	Qty
1	930000	O-Ring	1
2	930003	Coupler	1
3	930004	Nipple	1
4	113025H	25 ft. Hose	1
	113050H	50 ft. Hose	1
	124050	50 ft. Hose – 4800 PSI	1

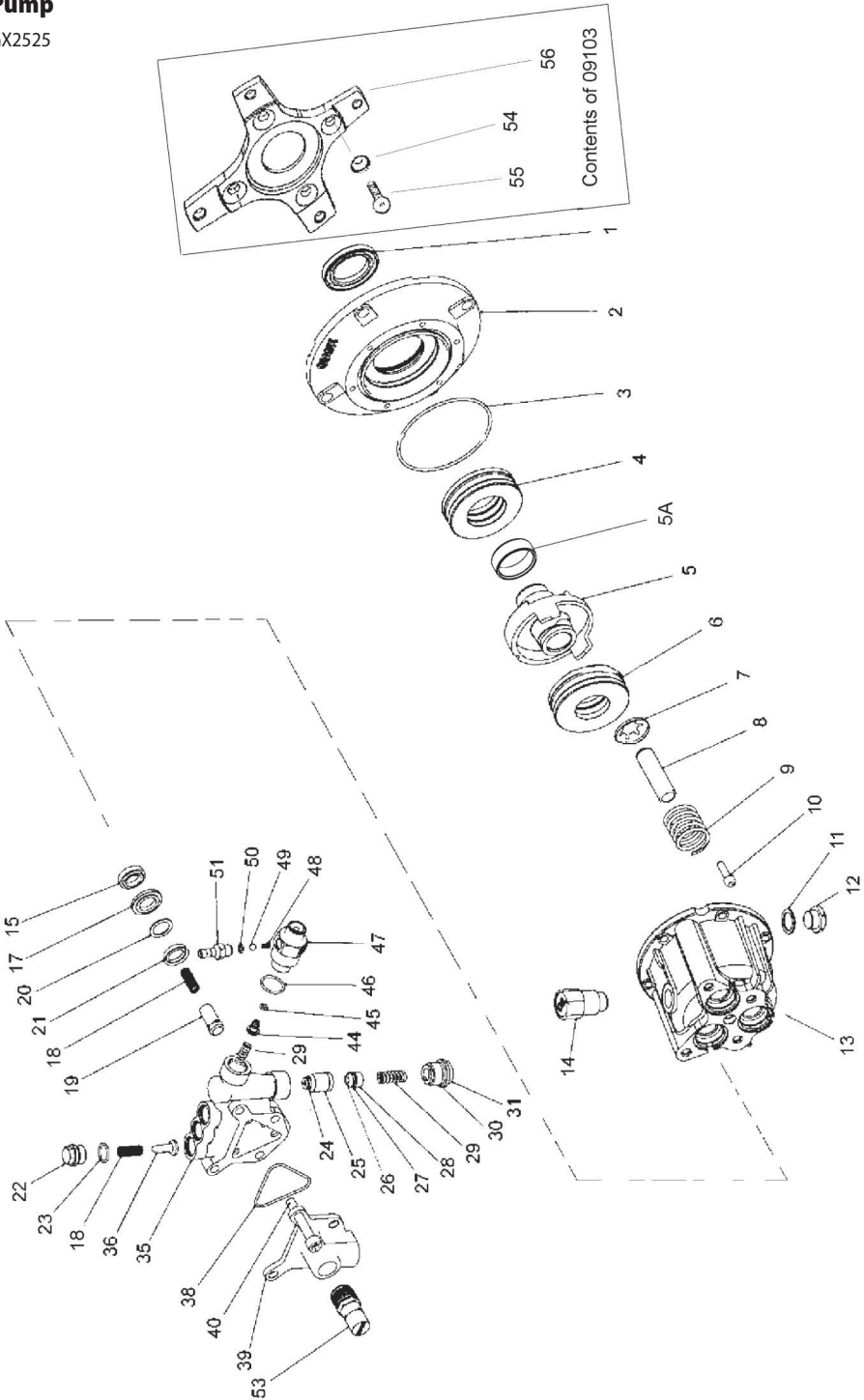
Pressure Washer Components



Ref	Part #	Description	Qty
1	69-1601S010	Engine, 5.5HP, 3/4" Shaft	1
2	GX2525	Pump	1
3	951504	Wheel	2
4	Frame E	Frame	1
5	315006	Snubber	2
6	930001	Coupler	1
7	993400C	Gun and Wand Assembly	1
8	113025H	25' Hose Assembly	1
	113050H	50' Hose Assembly	1
9	SKIT3	3.0 Orifice (15 Deg, 25 Deg, 40 Deg)	1
10	952250	Inlet Fitting Assembly	1
	952216	Replacement Washer Screen Only	1
11	930003	Coupler 3/8" FNPT	1
	930000	Replace Coupler O Ring	1
12	Chemical Injector - Low Pressure (adjustable on most models)		
13	961146	Thermal Relief Valve -Remove when gravity feeding -Remove when feeding with warm water	1
14	9571625	Hub Cap 3/4"	2
15	Unloader Valve - pressure adjustment knob		1

Pump

GX2525



Ref	Part #	Description	Qty.
1	07805	Radial Shaft Seal	1
2	06310	Adapting Flange	1
3	06294	O-Ring	1
4	06300	Rear Bearing	1
5	06566	Wobble Plate (GXRH2424)	1
5A	07882	Shaft Ring	1
6	06301	Front Bearing	1
7	06289	Spring Disk	3
8	06287	Plunger, 16mm	3
9	06288	Plunger Spring	3
10	06299	Socket Bolt	6
11	08192	Gasket	1
12	06273	Oil Drain Plug	1
13	06282	Crankcase (GXRV)	1
	06338	Crankcase (GXRH)	1
14	08083	Vent Cap (Horizontal Only)	1
15	06316	Oil Seal	3
17	06292	Spacer	3
18	07374	Valve Spring	6
19	06267	Guided P-Valve	3
20	06290	Pressure Ring	3
21	06315	V-Sleeve, 16mm	3
22	06296	Discharge Plug	3
14	08083	Vent Cap (Horizontal Only)	1
15	06316	Oil Seal	3
17	06292	Spacer	3
18	07374	Valve Spring	6
19	06267	Guided P-Valve	3
20	06290	Pressure Ring	3
21	06315	V-Sleeve, 16mm	3
22	06296	Discharge Plug	3
23	12007	O-Ring	3
24	23507	O-Ring	1
25	06710	Seat	1
26	06386	6mm S.S. Ball	1
27	06385	O-Ring	1
28	06384	Plastic Poppet Valve	1
29	06382	Spring	1
30	06410	O-Ring	1
31	06392	Cap	1
35	06412	Manifold	1
36	06295	Discharge Valve Cone	3
38	07910A	Triangle O-Ring	1
39	06298	Suction Flange	1
40	06302	Stud Bolt	4
44	06727	Orifice,	1

Ref	Part #	Description	Qty.
45	06312	O-Ring in Nozzle	1
46	07913	O-Ring	1
47	06303	Injector Retainer	1
48	23009	Spring	1
49	23010-0100	Ball	1
50	12516-0001	O-Ring	1
51	12517	Hose Barb	1
53	23422A	Thermal Relief Valve	1
54	07468	Locktooth Washer	4
55	07467	Screws	4
56	06334	Mounting Flange X Style	1
9103	09103EX	Gasoline Flange Kit	
70	09468	Oil Seal Kit	
	06316	Plunger Oil Seal	3
71	09465	Plunger Packing Kit	
	06290	Support Ring	3
	06315	V-Sleeve	3
72	09466	Valve Assembly Kit	
	07374	Valve Spring	3
	06267	Guided P-Valve	3
	06295	Discharge Valve Cone	3
	07373	Discharge Valve Spring	3
73	09534	Regulator Repair Kit	
	23507	O-Ring	1
	06710	Seat	1
	06386	6mm S.S. Ball	1
	06385	O-Ring	1
	06384	Plastic Poppet Valve	1
	06410	O-Ring	1

## Warranty

MCS Industries Ltd. will repair or replace, free of charge, any part or parts that are defective in material or workmanship or both. Transportation on parts or equipment submitted for repair or replacement under this warranty remains the responsibility of the purchaser. This warranty is effective for the time periods and subject to the conditions provided for in this policy. Warranty work must be performed by an authorized MCS Industries Ltd. Warranty Depot. For details on warranty locations, contact MCS Industries Ltd. Equipment at 1.800.882.1961. MCS Industries Ltd. reserves the right to refuse any claim do to negligence or abuse.

## Warranty Period

- ◆ Warranty coverage commences on the date of purchase by the end user or on the date the product has been first used for demonstration purposes.

Parts and Accessories:	90 Days
Machines: Consumer Duty	1 year
Machines: Light Duty	2 years
Machines: Industrial	5 years
Pumps:	5 years

## Customer Responsibility

- ◆ Customer must complete and submit warranty registration form provided with each new machine within 90 days of purchase date.
- 1. Proper service must be performed as detailed in the owner's manual. NOTE: Use only synthetic 15W50 pump oil, as indicated in the owner's manual.
- 2. Modifications and after market parts or accessories may void overall warranty coverage.
- 3. Repairs required as a result of collision, accident, negligence, misuse and lack of maintenance are not covered under warranty.
- 4. Repair work, including disassembly inspections, must be performed by an authorized MCS Industries Ltd. Warranty Depot.
- 5. Customer must provide the means of delivering the product to and from the MCS Industries Ltd. Warranty Depot. (Freight is not a warrantable expense). For the nearest MCS Industries Ltd. Warranty Depot, please call MCS Industries Ltd. at 1.800.882.1961.

## Disclaimer

Items not covered under warranty include normal wear & tear items such as O-rings, V-sleeves and packings, hose outer protective jacket and spray nozzles.

MCS Industries Ltd. disclaims any responsibility for loss of time or use of the product, or any other indirect, incidental or consequential damage, inconvenience or commercial loss.

